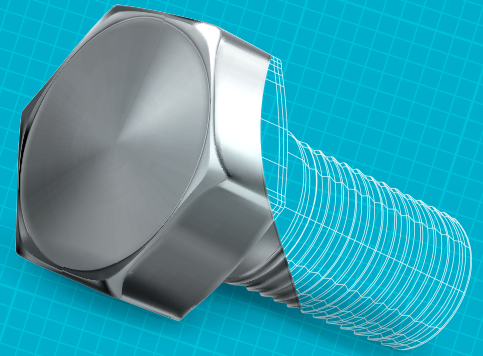


Plant:



CNC Milling Equipment

1 x Mori-Seiki MV45 - 4 Axis CNC Vertical Machining Centre (X= 1000mm, Y = 500 mm, Z = 500 mm).

1 x Bridgeport Interact 412 - 4 Axis CNC Vertical Machining Centre (X= 450mm, Y= 310mm, Z=300mm)

1 x Dahlih 4 Axis CNC Vertical Machining Centre (X=1000mm, Y=500mm Z=500mm)

1 x XYZ Prototrak 3000 - CNC Universal Miller (X= 800mm, Y= 430mm, Z=400mm)

Conventional Turning & Threading Equipment

1 x Colchester Triumph 600 Centre Lathe (50mm spindle bore x 1500mm bed length)

1 x Herbert 4 Senior Pre-Op Capstan Monoslide Lathe

4 x Ward 2DB Capstan Lathe

5 x Ward 3DB Capstan Lathes

2 x Ward 3DS Capstan Lathes

4x Ward 3DB Capstan Lathes with bar feed

1x Ward 7E Capstan Lathe (127mm Spindle bore x 1200mm bed length)

2x Herbert 4 Senior pre-op capstans

Automatic Lathes

3 x EMI-MEC Microsprint 50

2 x EMI-MEC Microsprint 32

CNC Turning Chucking Lathes

1 x Leadwell large bore LTC-35 2007 115mm spindle bore 2.1 metres between centres 600mm Max turning DIA 381 mm Chuck Hydraulic Steady

1 x Yang ML25 with 8" Chuck 52mm spindle bore

1 x Mori-Seiki SL15 ~ 2 Axis Slant Bed CNC Lathe (150mm chuck x 36mm spindle bore x 300mm between centres)

1 x Mori-Seiki SL25B/500 ~ 2 Axis Slant Bed CNCLathe (250mm chuck x 75mm spindle bore x 500mm between centres)

1 x Mori-Seiki SL25/1000 ~ 2 Axis Slant Bed CNC Lathe (300mm chuck x 65mm spindle bore x 1000mm between centres)

2 x Yang ML25 ~ 2 Axis Slant Bed CNC Lathe + 1 with bar feed (250mm chuck x 65mm spindle bore x 600mm between centres)

2 x Yang CK2-A ~ 2 Axis Slant Bed CNC Lathe (250mm chuck x 65mm spindle bore x 500mm between centres)

1 x Yang CK3-B ~ 2 Axis Slant Bed CNC Lathe (300mm chuck x 75mm spindle bore x 1320mm between centres)

1 x XYZ Protorn 410 ~ 2 Axis CNC Gap Bed Centre Lathe (250mm chuck x 75mm spindle bore x 1000mm between centres)

1 x Takisawa TM20 ~ CNC Lathe with sub spindle and power tooling (250mm chuck x 125mm Chuck on sub spindle x 800mm between centres)

CNC Turning Bar Feed Lathes

1 x CNC Doosan S280 Lathe 8" Chuck and 50mm Bore, collet, chuck and bar feed

1 x Yang ML15 ~ 2 Axis Slant Bed CNC Lathe (with Hydrafeed ML1 magazine bar feed – 52mm bar feed capacity) (200mm chuck x 52mm spindle bore x 450mm between centres)

1 x Yang ML15 ~ 2 Axis Slant Bed CNC Lathe (with Hydrafeed ML1 magazine bar feed – 42mm bar feed capacity) (200mm chuck x 42mm spindle bore x 450mm between centres)

1 x Hardinge CNC Lathe Capstan type withbar feed 42mm spindle bore max 16C collet type

2 x CNC Dugard Eagle 6" Chuck 250mm between centres Barfeed 50mm Bar Capacity

Conventional Milling & Polygon Turning Equipment

2 x Wera Profilator RM60 ~ Polygon Turning Lathe

Thread Rolling Equipment

1 x ORT 2RP30 ~ Hydraulic Thread Roller (30 tonnes maximum pressure, up to 100mm diameter)

1 x TRT Thread Roller (100 tonnes maximum pressure – up to 150mm diameter)

Vibro-Etching Equipment

5 x Pro-Pen 3000 ~ Pneumatic Marking Machine

Hot Forging & Broaching Equipment

1 x Etchells No 1 ~100 tonne Twin Saddle Vertical Upset Hot Forging Press

1 x Etchells No 2 ~125 tonne Twin Saddle Vertical Upset Hot Forging Press

1 x Rascher ~100 tonne Vertical Upset Hot Forging Press

1 x Clarke Strongarm ~ 15 tonne Hydraulic Broaching Press

1 x Norton D50 ~ 50 tonne Double sided Hydraulic Broaching Press

Sawing Equipment

2 x Sawcraft C-260NC CNC Bundlecut saws

3 x Everising S250 NC Bundlecut saws

1 x 300mm CNC Saw Karmeta 300

1 x Cocen C-320nc Twin Collar Saw

1 x Prosaw LX330AE Automatic Saw

2 x Chamfermate chamfering machine

Miscellaneous Equipment

Cincinnati centerless grinder

Jones & Shipman surface grinder

Sparkomatic spark erosion machine

